

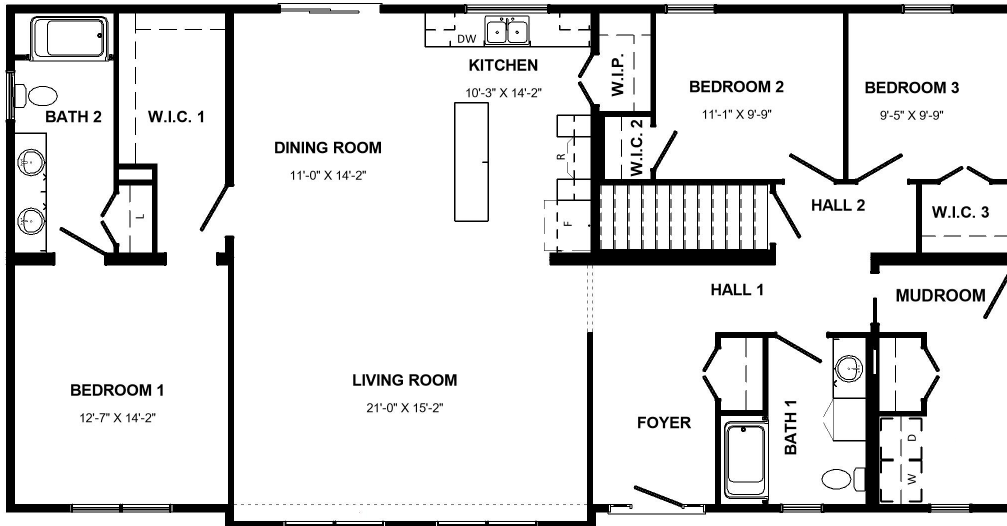
# WINTERHAVEN

 **3**  
BEDS

 **1,822**  
SQ. FT.

 **2**  
BATH

 **30x60**  
WxL



## Features we love:

- This 1822 sq. ft home is our largest bungalow and provides you with a thoughtful layout and spacious home.
- Main living area complete with cathedral ceiling and large windows that create a wonderful living space for the family to gather.
- L-shaped kitchen with a large 94" island and a convenient walk-in-pantry.
- Spacious front foyer opens the home and has a large coat closet.
- The primary suite is complete with a large walk-in-closet and an ensuite bath with dual vanities.
- Mudroom complete with laundry is located at the side of the home for future garage.



**EXPLORE OUR FLOOR PLANS ONLINE**  
[www.kenthomes.com/homes](http://www.kenthomes.com/homes)

All renderings & pictures shown are for illustration purposes only. Some items shown may not be standard and/or represent the exact product or finish.



# WINTERHAVEN

1,822  
SQ. FT.



3  
BEDS



30x60  
WxL



2  
BATHS

