



MARINER

1,700
SQ. FT.



3
BEDS



30x58
WxL

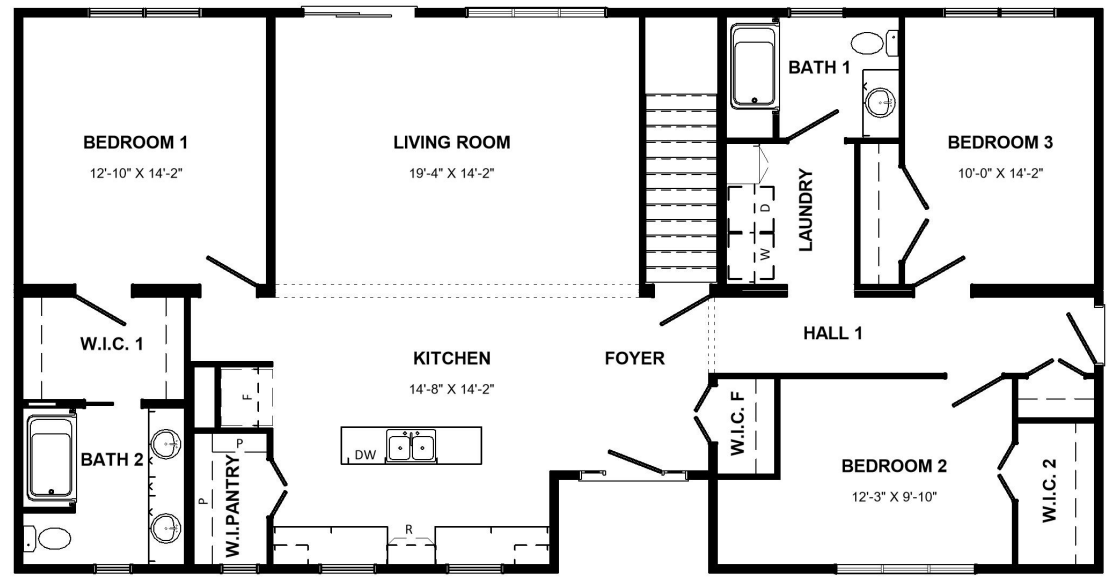


2
BATHS



Features we love:

- Galley kitchen with 92" spacious island and a walk-in-pantry.
- Cathedral ceiling and windows in the living area of the home invite natural light, creating a warm atmosphere.
- Built in porch entry, this feature adds a charming touch to the home's exterior.
- Front foyer storage and coat closet.
- Main floor laundry beside the main bathroom.
- Primary suite features a walk-in-closet and ensuite with shower and dual sinks.



EXPLORE OUR FLOOR PLANS ONLINE
www.kenthomes.com/homes

All renderings & pictures shown are for illustration purposes only. Some items shown may not be standard and/or represent the exact product or finish.



MARINER



3
BEDS



1,700
SQ. FT.



2
BATH



30x58
WxL



EXPLORE OUR FLOOR PLANS ONLINE

www.kenthomes.com/homes

All renderings & pictures shown are for illustration purposes only. Some items shown may not be standard and/or represent the exact product or finish.