



MAEVA

1,747
SQ. FT.



3
BEDS



32x56
WxL

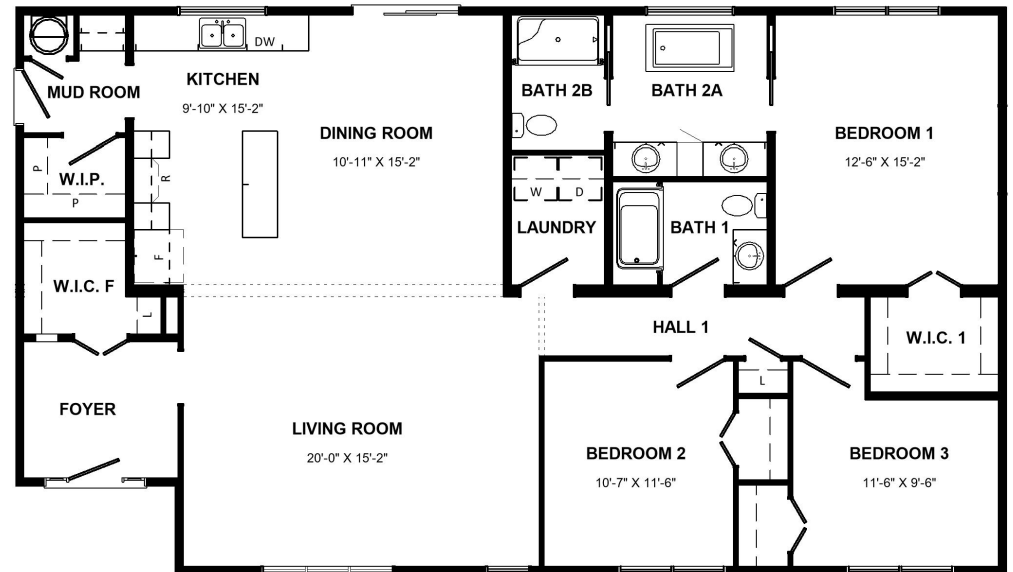


2
BATHS



Features we love:

- L-shaped kitchen with 72" island and adjacent walk-in-pantry.
- The mudroom is located at the side of the home for a future garage.
- A recessed covered porch built in the plant.
- Large walk-in foyer closet, perfect for organizing coats, shoes, and seasonal gear.
- Primary suite with a four-piece luxurious ensuite bath.
- Choose a single-story layout for easy living or add a full basement to maximize the space.
- Open concept living area that connects seamlessly with the dining space, ideal for entertaining.





MAEVA



3
BEDS



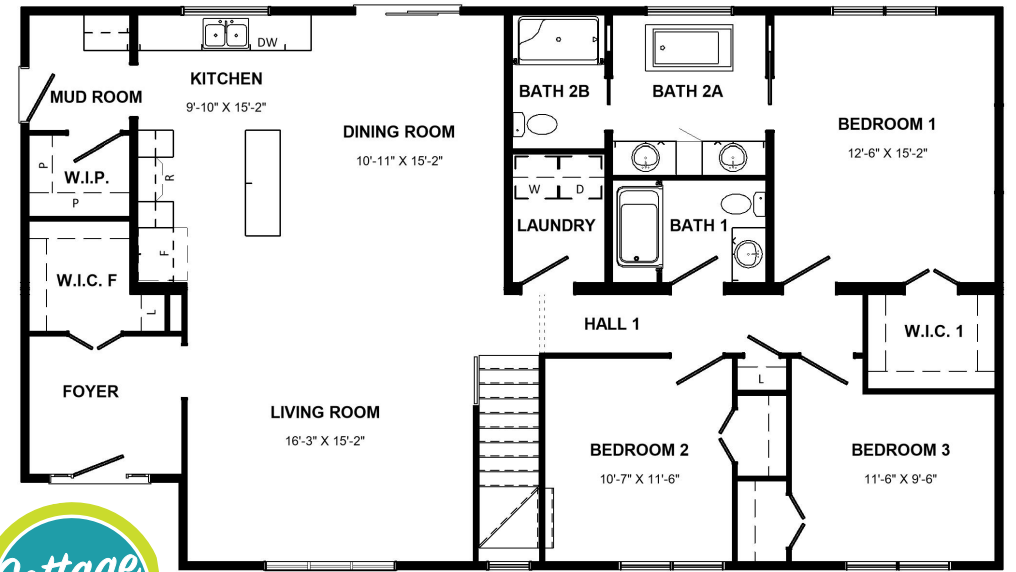
1,747
SQ. FT.



2
BATH



32x56
WxL



EXPLORE OUR FLOOR PLANS ONLINE
www.kenthomes.com/homes

All renderings & pictures shown are for illustration purposes only. Some items shown may not be standard and/or represent the exact product or finish.