

# HARBOUR



**2**  
BEDS



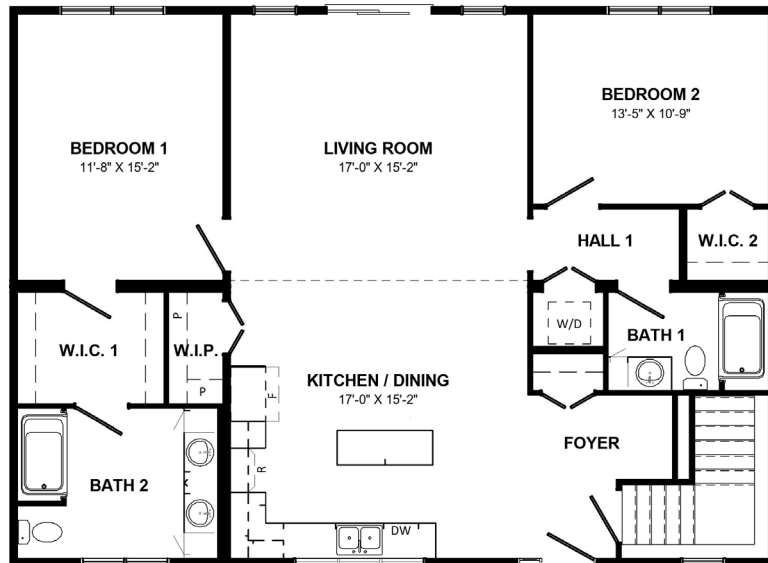
**1,408**  
SQ. FT.



**2**  
BATH



**32x44**  
WxL



## Features we love:

- L-shaped kitchen with 68" island and a walk-in-pantry.
- The main living area is open front to back and features atrium ceiling through living area.
- Privately located primary bedroom accommodates a king-size bed and is complete with ensuite bath that features dual vanity and walk-in-closet.
- Secondary bedroom with a walk-in closet and private bath access.
- Main floor stackable laundry closet.
- Choose a single-story layout for easy living or add a full basement to maximize the space.
- Compact design that has a large walk-in coat closet.



**EXPLORE OUR FLOOR PLANS ONLINE**

[www.kenthomes.com/homes](http://www.kenthomes.com/homes)

All renderings & pictures shown are for illustration purposes only. Some items shown may not be standard and/or represent the exact product or finish.

Kent  Homes





# HARBOUR

**1,408**  
SQ. FT.



**2**  
BEDS



**32x44**  
WxL



**2**  
BATHS

