



# KENSINGTON

1,200  
SQ. FT.



3  
BEDS



16x75  
WxL



2  
BATHS



## Features we love:

- Enjoy a stylish L-shaped kitchen with a practical island and ample storage with the corner walk-in-pantry.
- Relax and recharge in thoughtfully placed bedrooms.
- The compact yet comfortable floor plan is ideal for first-time home buyers or those looking to downsize.
- Generous storage throughout the home.
- Relax in spacious bedrooms, including a primary suite complete with a private ensuite bathroom and a generous walk-in closet.



# KENSINGTON



**3**  
BEDS



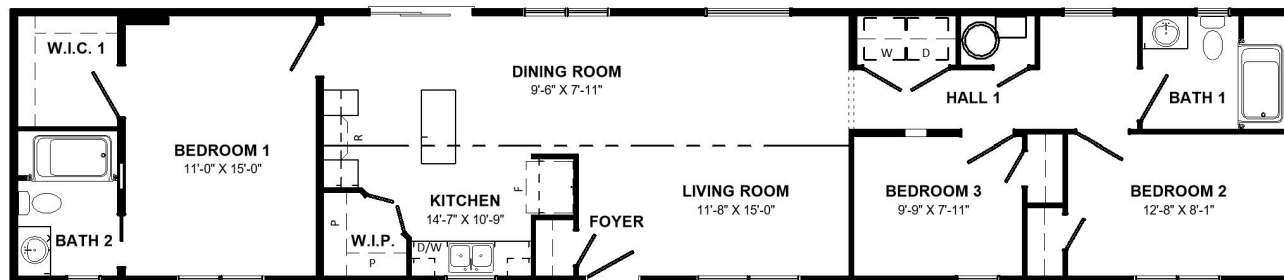
**1,200**  
SQ. FT.



**2**  
BATH



**16x75**  
WxL



**EXPLORE OUR FLOOR PLANS ONLINE**  
[www.kenthomes.com/homes](http://www.kenthomes.com/homes)

All renderings & pictures shown are for illustration purposes only. Some items shown may not be standard and/or represent the exact product or finish.

Kent  Homes