



FAIRVIEW

1,152
SQ. FT.



3
BEDS



16x72
WxL

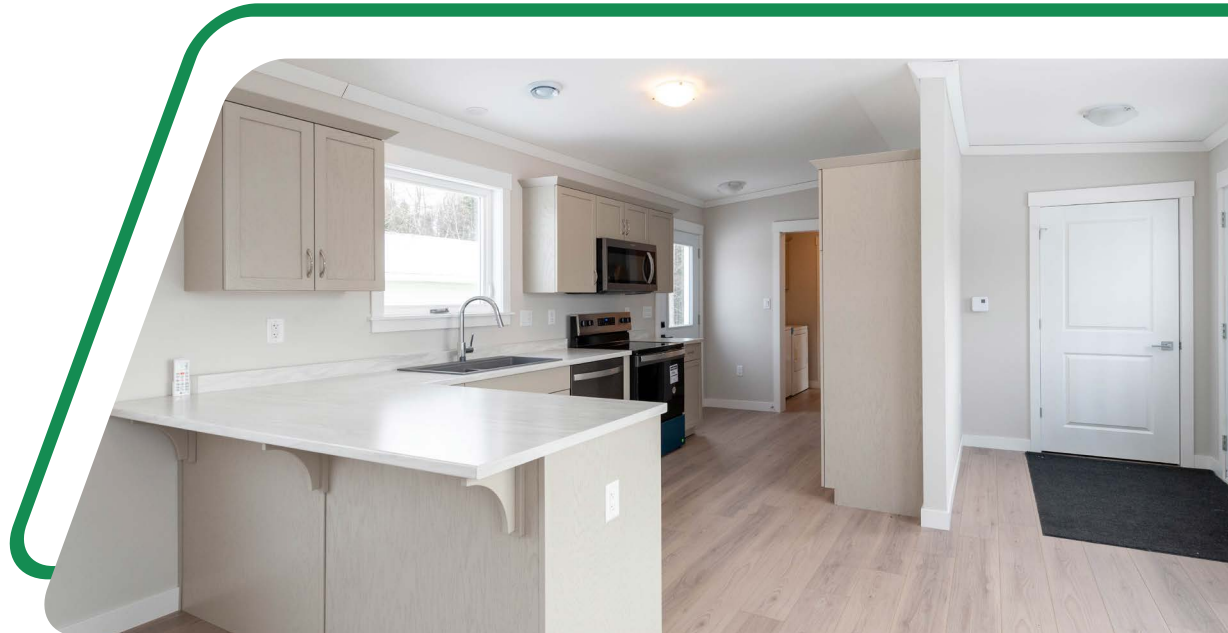


2
BATHS



Features we love:

- Enjoy a stylish galley kitchen with a large peninsula and ample storage.
- Open concept with large windows allowing light to flood the main living area.
- The compact yet comfortable floor plan is ideal for first-time home buyers or those looking to downsize.
- Generous storage throughout the home.
- Relax in spacious bedrooms, including a primary suite complete with a private ensuite bathroom and a generous closet.



FAIRVIEW



3
BEDS



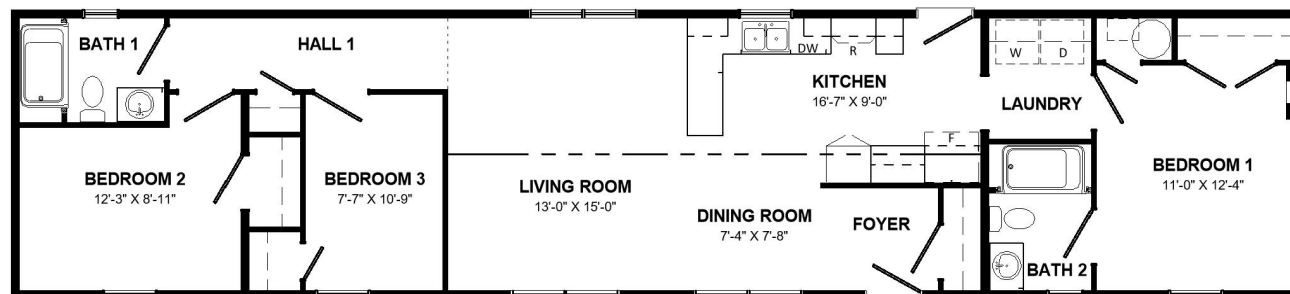
1,152
SQ. FT.



2
BATHS



16x72
WxL



EXPLORE OUR FLOOR PLANS ONLINE
www.kenthomes.com/homes

All renderings & pictures shown are for illustration purposes only. Some items shown may not be standard and/or represent the exact product or finish.

Kent  Homes