



# BEESANDS

**1,024**  
SQ. FT.



**2**  
BEDS



**16x64**  
WxL

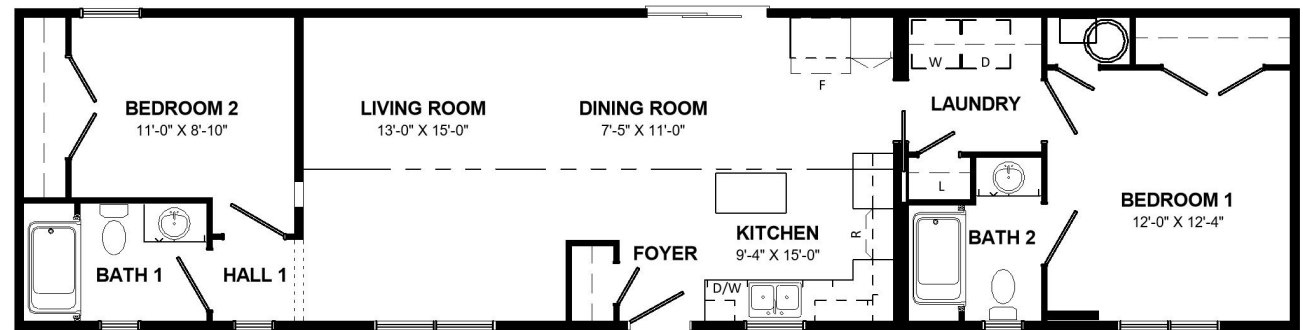


**2**  
BATHS



## Features we love:

- An L-shaped kitchen, an island that features the kitchen sink, and a 30" cabinet pantry.
- Compact floor plan ideal as a starter home and for downsizers.
- Cathedral ceiling through the main living area.
- Bedroom locations provide ample privacy.
- Open concept with lots of natural light.
- Pocket door to separate the kitchen & living area from the laundry room and the primary room.



**Kent**  **Homes**

**EXPLORE OUR FLOOR PLANS ONLINE**  
[www.kenthomes.com/homes](http://www.kenthomes.com/homes)

All renderings & pictures shown are for illustration purposes only. Some items shown may not be standard and/or represent the exact product or finish.

