

HEMLOCK



3
BEDS



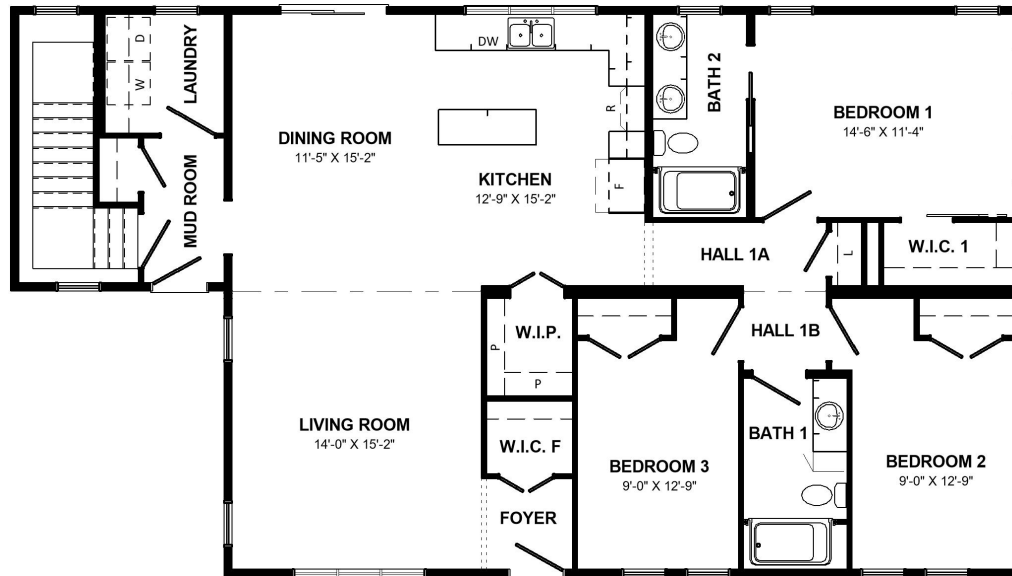
1,632
SQ. FT.



2
BATH



32x57
WxL



Features we love:

- Bright open-concept space combining stylish living and dining areas and a modern L-shaped kitchen that features an island.
- Convenient side-entry with a mudroom and laundry area, plus an optional stairwell for added flexibility.
- Spacious primary suite with a generous walk-in closet and a private full bathroom with dual vanity sinks.
- Two comfortable bedrooms with ample closet space that share a full bathroom.
- Choose a single-story layout for easy living or add a full basement to maximize the space.



EXPLORE OUR FLOOR PLANS ONLINE
www.kenthomes.com/homes

All renderings & pictures shown are for illustration purposes only. Some items shown may not be standard and/or represent the exact product or finish.

Kent  Homes



HEMLOCK

1,632
SQ. FT.



3
BEDS



32x57
WxL



2
BATHS

